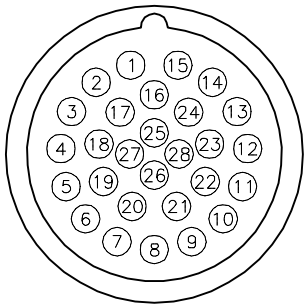


FEMALE END VIEW

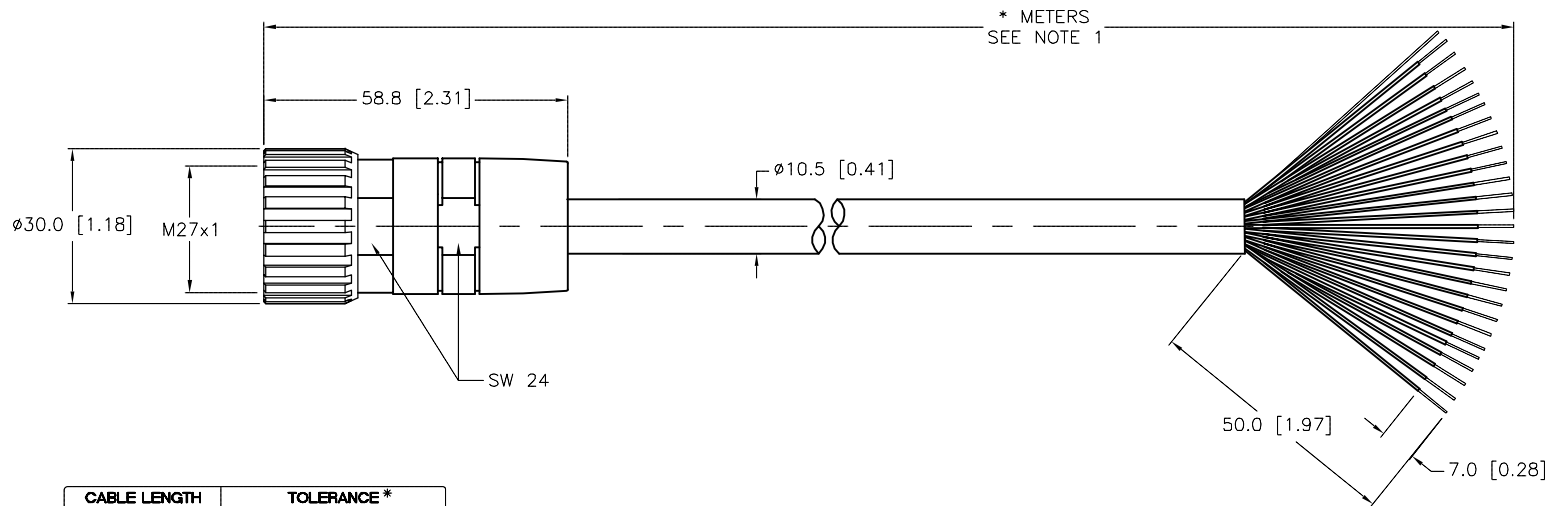


- 1 = BROWN
- 2 = WHITE/GREY
- 3 = BLUE/GREY
- 4 = BROWN/GREY
- 5 = BLACK/YELLOW
- 6 = WHITE/YELLOW
- 7 = BLUE/YELLOW
- 8 = BROWN/YELLOW
- 9 = BLACK/RED
- 10 = WHITE/RED
- 11 = BLUE/RED
- 12 = BROWN/RED
- 13 = BLACK
- 14 = WHITE
- 15 = BLUE
- 16 = BLACK/GREY
- 17 = BROWN/ORANGE
- 18 = WHITE/ORANGE
- 19 = BLACK/ORANGE
- 20 = BLACK/GREEN
- 21 = WHITE/GREEN
- 22 = BLUE/GREEN
- 23 = BROWN/GREEN
- 24 = BLUE/ORANGE
- 25 = GREEN/YELLOW
- 26 = GREY
- 27 = ORANGE
- 28 = N/C

DRAIN/SHIELD

SPECIFICATIONS

CONTACT CARRIER MATERIAL	NYLON or PBT
CONTACT MATERIAL/PLATING	GOLD-PLATED COPPER-ZINC ALLOY
CONNECTOR HOUSING MATERIAL/PLATING	NICKEL-PLATED COPPER-ZINC DIE CAST
GASKET	RUBBER (NBR or FPM)
RATED CURRENT [A]	3.0 A
RATED VOLTAGE [V]	150 V
OUTER JACKET MATERIAL/COLOR	PVC/YELLOW
CONDUCTOR INSULATION MATERIAL	PVC
NUMBER OF CONDUCTORS [AWG]	27x22 AWG
DRAIN/SHIELD	22 AWG DRAIN/POLYESTER FOIL SHIELD
TEMPERATURE	-40°C TO +105°C (-40°F TO +221°F)
PROTECTION CLASS	IEC IP67



CABLE LENGTH	TOLERANCE*
ALL LENGTHS	+ 4% (OR 50mm) OF LENGTH - 0% (OR 0mm) OF LENGTH WHICHEVER IS GREATER
STRIP LENGTH	TOLERANCE*
0-7mm	±0.5mm
8-29mm	±1.0mm
30-49mm	±2.0mm
50-69mm	±3.0mm
70-100mm	±4.0mm
OVER 100mm	±5.0mm

\* UNLESS OTHERWISE SPECIFIED

NOTES:

1. "\*" INDICATES LEAD LENGTH IN METERS. CONTACT TURCK TO ORDER SPECIFIC LENGTHS.

SOURCE DRAWING - FOR REFERENCE ONLY

RELATED DOCUMENTS	3RD ANGLE PROJECTION	THIS DRAWING IS CONFIDENTIAL AND THE PROPERTY OF TURCK INC. USE OF THIS DOCUMENT WITHOUT WRITTEN PERMISSION IS PROHIBITED.		3000 CAMPUS DRIVE MINNEAPOLIS, MN 55441 1-800-544-7769 (763) 553-7300 (763) 553-0708 fax www.turck.us	
1.		DRFT	JB	DATE	10/15/03
2.		APVD	DD	SCALE	1=1.0
3.	ALL DIMENSIONS DISPLAYED ON THIS DRAWING ARE FOR REFERENCE ONLY	UNIT OF MEASUREMENT		DESCRIPTION DK 28-061-*	
4.		MILLIMETER [ INCH ]			
MATERIAL	CONTACT TURCK FOR MORE INFORMATION	IDENTIFICATION NO.		REV	
SEE SPECIFICATIONS				D	
FINISH	DO NOT SCALE THIS DRAWING	FILE: 777002632		SHEET 1 OF 1	
SEE SPECIFICATIONS					

D	UPDATE RATED CURRENT SPECIFICATIONS	KMY	07/24/14	46464
REV	DESCRIPTION	BY	DATE	ECO NO.